

# Public Document Pack

## Southend-on-Sea City Council

### Strategy, Change & Governance

Executive Director: Stephen Meah Sims (Interim)

📍 Civic Centre, Victoria Avenue, Southend-on-Sea, Essex SS2 6ER

☎ 01702 215000

🌐 [www.southend.gov.uk](http://www.southend.gov.uk)

Working to make  
lives better  
[www.southend.gov.uk](http://www.southend.gov.uk)



05 December 2022

## HEALTH & WELLBEING BOARD - THURSDAY, 8TH DECEMBER, 2022 SUPPLEMENTARY REPORT PACK – AGENDA ITEM 6 – BETTER CARE FUND – DISCHARGE FUND

Please find enclosed, for consideration at the next meeting of the Health & Wellbeing Board taking place on Thursday, 8th December, 2022, the following report that was unavailable when the agenda was printed.

Agenda No	Item
--------------	------

6	<b><u>Better Care Fund - Discharge Fund</u> (Pages 1 - 4)</b>
---	---

Report of Lead Commissioner (Older People) / BCF Lead attached

Robert Harris  
Principal Democratic Services Officer

This page is intentionally left blank

# Southend Health & Wellbeing Board

## Report of the Director of Commissioning

To  
**Health & Wellbeing Board**  
on  
**8<sup>th</sup> December 2022**

Report prepared by: Jeanette Toy, Lead Commissioner, Older People and SCCBCF Lead

Agenda  
Item No.

**6**

For information only	x	For discussion		Approval required	
----------------------	---	----------------	--	-------------------	--

---

### **Better Care Fund – Adult Social Care Discharge Fund (Southend on Sea City Council/ Integrated Care System)**

Adult Social Care Discharge Fund **2022-23 update for sign off**

#### **Part 1 (Public Agenda Item)**

---

#### **Purpose**

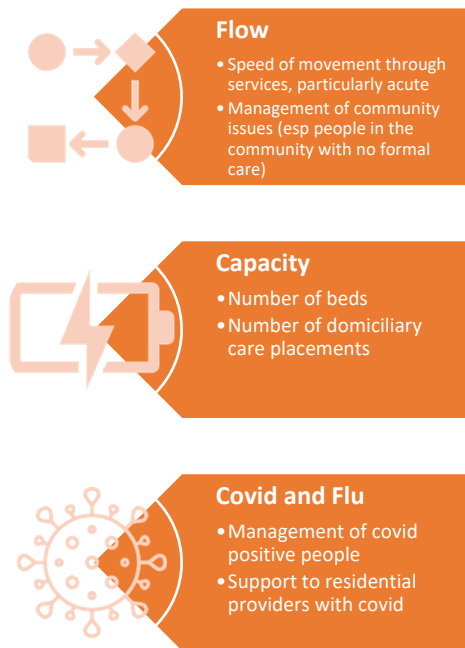
The purpose of this report:

1. To provide a general context for the Health and Wellbeing Board about potential Winter pressures and the current winter planning situation for Southend.
2. To inform the Health and Wellbeing Board that the Adult Social Care Discharge Fund 2022-23 was announced on the 21<sup>st</sup> of November, with a submission date of the 16<sup>th</sup> of December 2022. This funding will be distributed through the Better Care Fund and requires a joint plan from Adult Social Care and the Integrated Care Board.
3. To seek approval from the board for the final Adult Social Care Discharge Fund submission to be approved by the Chair on the 15<sup>th</sup> of December 2022. This is due to the submission date required by the Adult Social Care Discharge Fund, and the short time available to prepare a final plan. This will allow Southend City Council and Mid and South Essex Integrated Care System time to complete a joint submission. This briefing paper contains an outline of proposed expenditure, giving an overview of the suggested projects that meet the guidelines below. The final submission will include the agreed distribution.

## Background

### Winter Planning

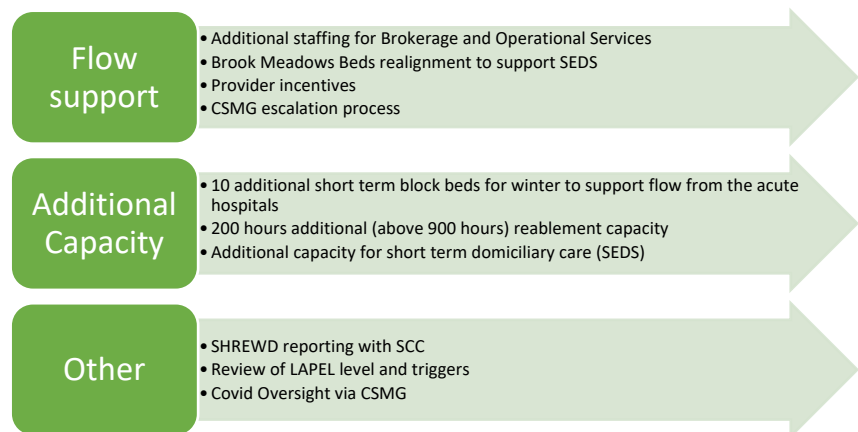
There are a set of national, regional, and local asks of the whole Southend system as we work to support vulnerable people and communities over the winter period. These include ensuring that people in the community have the right ongoing social care support, have the right primary and community health support, and can access ambulance and emergency health services as needed. We are also concerned to provide the right support to staff across health and social care to enable them to be resilient over what may be a challenging period.



Winter planning sits in the context of identifying the causes of pressure that can be addressed and managed. Alongside the ordinary seasonal demand increase across health and social care in the winter there are specific issues that need to be addressed to manage – these include flow management for crisis situations (including hospital discharge and community crisis), capacity to manage demand, and the impact of covid and flu.

Given the challenges of managing a complex system Southend City Council is working to deliver a short list of focused and impactful actions that we can deliver and monitor.

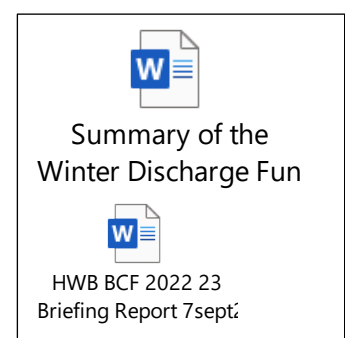
These include actions to support flow, particularly in Southend Hospital, additional capacity to manage demand, and some other actions primarily focused on monitoring reporting and evaluating delivery.



### Better Care Fund

BCF funds are managed locally, and in each Local Authority area the Council is legally obliged to submit an agreed BCF plan jointly with their Integrated Care System (ICS).

Further information can be found in the briefing report of the 7<sup>th</sup> of September 2022 for the main BCF submission and a more detailed summary of the Adult Social Care Discharge Fund:



## **Adult Social Care Discharge Fund**

The Adult Social Care Discharge Fund 2022-23 was announced on the 21st of November, with a submission date of the 16th of December 2022. This funding will be distributed through the Better Care Fund and requires a joint plan for Southend.

### **The Adult Social Care Discharge Fund guidance says that the funding can be used to:**

- enable more people to be discharged to an appropriate setting, including from mental health inpatient settings, with adequate and timely social care support as required
- prioritise those approaches that are most effective in freeing up the maximum number of hospital beds and reducing bed days lost within the funding available, including from mental health inpatient settings. D2A and provision of homecare is recognised as an effective option for discharging more people in a safe and timely manner. Residential care to meet complex health and care needs may be more appropriate for people who have been waiting to be discharged for a long time
- boost general adult social care workforce capacity through recruitment and retention activity, where that will help to reduce delayed discharges from hospital. This could include, but is not limited to, measures which: increase hours worked by existing workforce; improve retention of existing workforce; provide additional or redeployed capacity from current care workers; or support local recruitment initiatives. Local authorities will need to satisfy themselves that steps they take to boost workforce capacity align with their functions under the Care Act 2014, and each local authority will need to take into account any legal, employment law, equality, or tax considerations that may arise
- Local areas may use up to 1% of their total allocation (local authority and ICB) for reasonable administrative costs associated with distributing and reporting on this funding.

### **Proposed Adult Social Care Discharge Fund Schemes**

Southend has been allocated £687k of winter discharge funding as a local authority and Mid and South Essex integrated Care System has been allocated £3.2m, of which £537k has been allocated to Southend (on a weighted population basis).

As a system we are aligned around approach to the schemes we wish to pursue both at Integrated Care System wide level and local to Southend with the health allocation of the Adult Social Care Discharge Fund. We are aware that the Mid and South Essex Integrated Care System allocation is less than anticipated and MSE ICS are working to ensure any future Discharge fund allocations are appropriate.

The Integrated Care System has indicated that they are also in agreement with the approach SCC are taking with their allocation – predominantly focussed on strengthening and incentivising the care market – in line with the guidance and conditions of the fund.

<b>Southend City Council</b>	
<b>Additional Capacity</b>	<b>Reablement</b>
<b>10 additional residential care beds</b>	<b>short term</b>
<b>Provider Incentives</b>	
<b>Mid and South Essex (Southend elements)</b>	
<b>ICS wide Designated setting</b>	
<b>Ward based</b>	<b>enablement across all 3 hospital sites</b>
<b>Enhanced patient transport offer (flexibility and capacity)</b>	
<b>Enhanced equipment offer (in line with COVID response)</b>	
<b>7 day working for Mental Health clinical workforce</b>	
<b>Additional SEDS capacity</b>	

This page is intentionally left blank